

SAFETY IN THE CITY

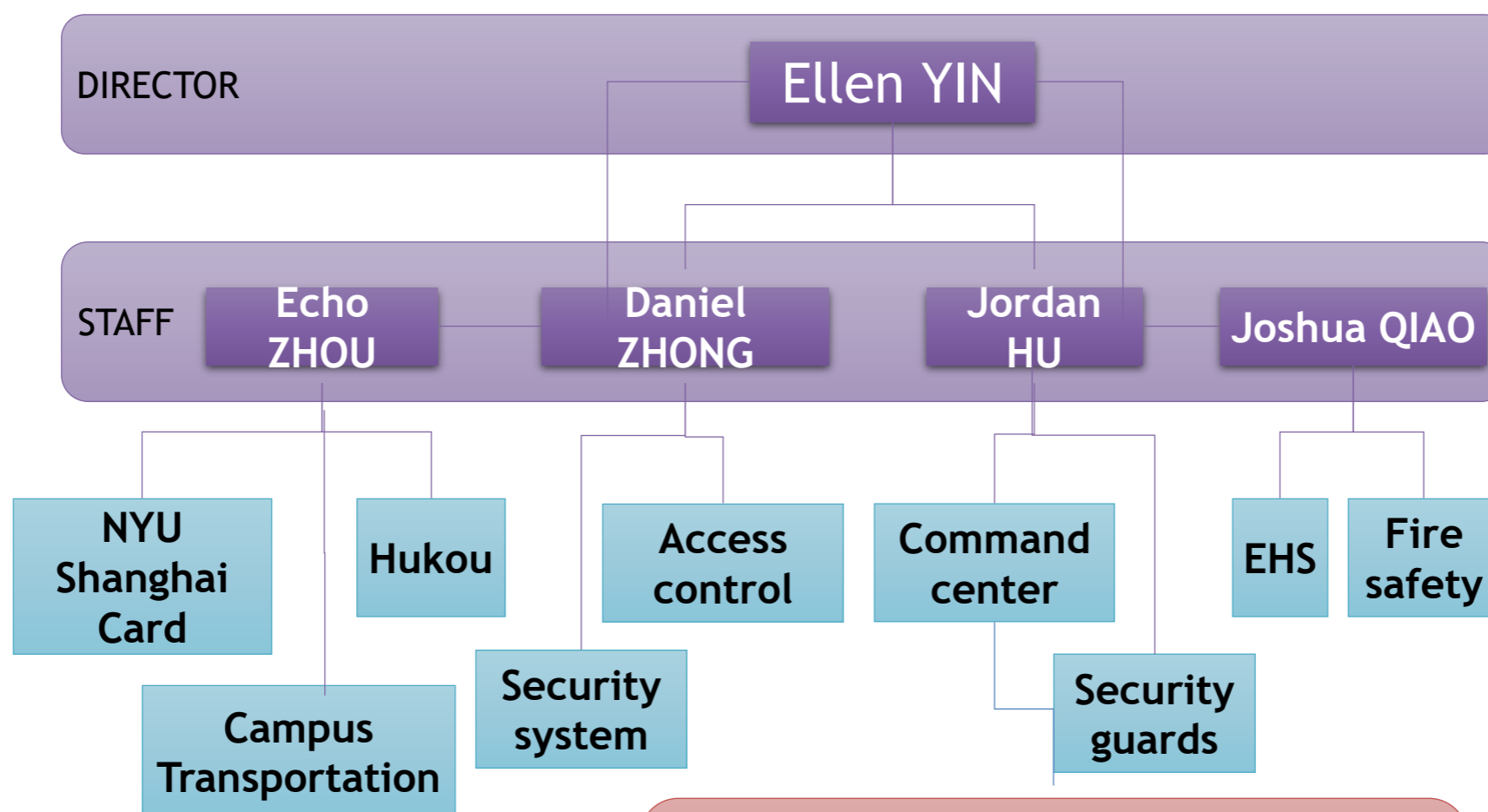
NYU Shanghai Department of Public Safety





上海纽约大学
NYU SHANGHAI

PUBLIC SAFETY TEAM



Room 118
24/7 Hotline:
95500 (using NYUSH phones)
(021) 2059 5500 (using non-NYUSH phones)



Purpose Of Safety Orientation

- 1 Understand what kind of thing is safe
- 2 Avoid unsafety behavior
- 3 Safe stay in Shanghai



上海纽约大学
NYU SHANGHAI

CONTENT

Safety on Campus

On-campus security services and facilities

Contact Info

Phone numbers and emails you can use to contact Public Safety

Safety in Shanghai:

Petty crimes such as pickpocketing and theft in crowded areas.

Scams involving people on the street and online, especially those directed towards foreigners.

Safety tips for travelling around the city and navigating Shanghai's roads.



上海纽约大学
NYU SHANGHAI

SAFETY ON CAMPUS



- “Crimes of Opportunity” only take a moment
- Keep personal belongings with you.
- Always lock your suite doors. Use the deadbolt.
- Establish rules with your suitemates.
- Be wary of strangers conversing with you on Campus and other public spots
- Report suspicious persons or activities to a Public Safety Officer



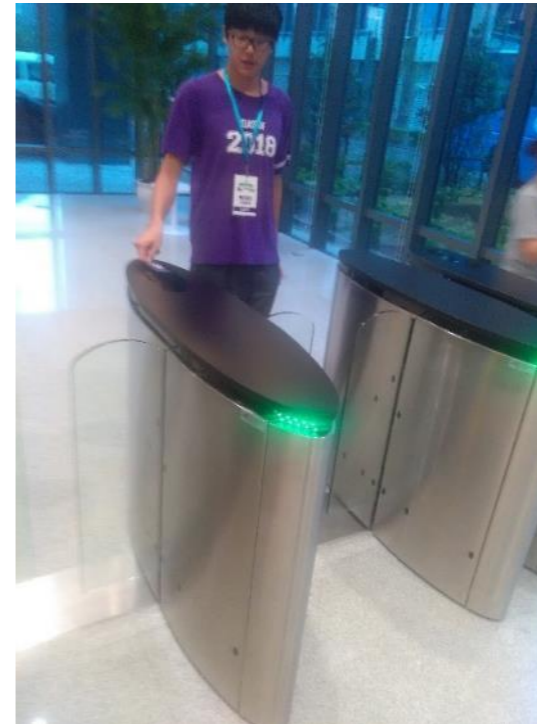
上海纽约大学
NYU SHANGHAI

CARD SERVICES

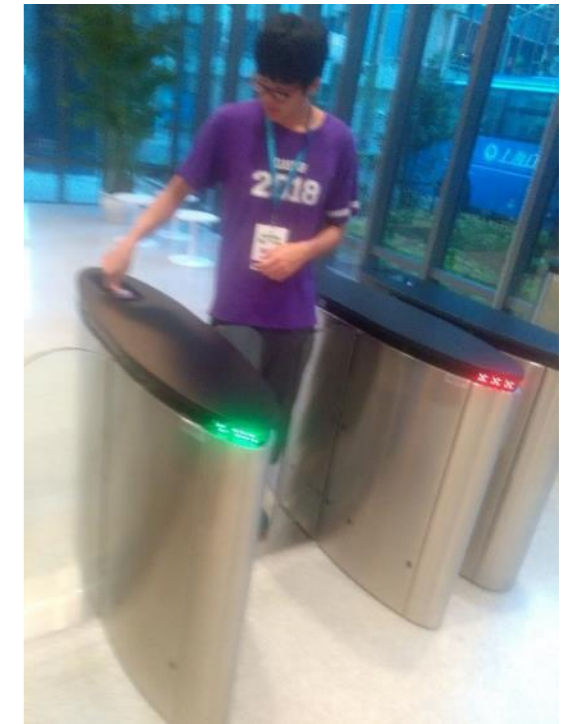
NYU Shanghai Card Services

- The NYU cards will allow access to the academic building by tapping on the turnstiles or the card readers.
- For card replacement, please go to Room 118 to report your request.
- The system prevents others from following you into the Academic Building
- It also discourages opening the turnstiles for others. Doing so can harm you when the turnstiles suddenly close.

Correct:



Incorrect:





上海纽约大学
NYU SHANGHAI

SECURITY SERVICES

- Foot patrol by security guards on and around campus
- Duty phone in Command Center (Room 118)
A 24/7 hotline: (86) 21 2059 5500
- Special security services for major events
- Lost and Found Service at Room 118





上海纽约大学
NYU SHANGHAI

SECURITY FACILITIES

Security Facilities

- Video surveillance system for public areas in the academic building and dorm
- Fire alarm system (smoke detector and sprinkler system)





上海纽约大学
NYU SHANGHAI

EVACUATION

- In cases of emergencies such as earthquakes or fires, do not use the elevator
- Follow the green exit signs that lead the way to the emergency exits
- Regular evacuation drills are held both on-campus and on the dormitories to ensure preparedness





上海纽约大学
NYU SHANGHAI

SHUTTLE BUSES

Inter-Campus Shuttle Bus between ECNU Campus, at Puxi, and the Pudong Campus. This service is available from Monday to Friday.

ECNU hosts NYU Shanghai's Research Institute and some seminars. You can take the shuttle bus to attend these events.

| ECNU to Pudong Campus | Pudong Campus To ECNU |
|-----------------------|-----------------------|
| 7:30 AM | - |
| - | 9:30 AM |
| 11:00 AM | - |
| - | 1:00 PM |
| 3:00 PM | - |
| - | 6:00 PM |
| 7:45 PM | - |





上海纽约大学
NYU SHANGHAI

SAFE USE OF APPLIANCES

-Never use appliances that violate dormitory regulations. These include water boilers and electrical heaters, which are serious fire risks.

-Pay attention to the Voltage in Chinese sockets. US appliances tend to use only 110V, while Chinese sockets carry 220V. Plugging incompatible appliances could lead to damage, so use voltage adapters.

-Don't overload extensions cords with multiple appliances.



-NEVER use double extension cords. Improper use causes around 280 deaths in the US annually and you are strictly prohibited from doing so.



-Do not let your cords tie up in knots. This can lead to short circuiting





上海纽约大学
NYU SHANGHAI

- **Please do not leave when you are cooking.**





上海纽约大学
NYU SHANGHAI

fire prevention



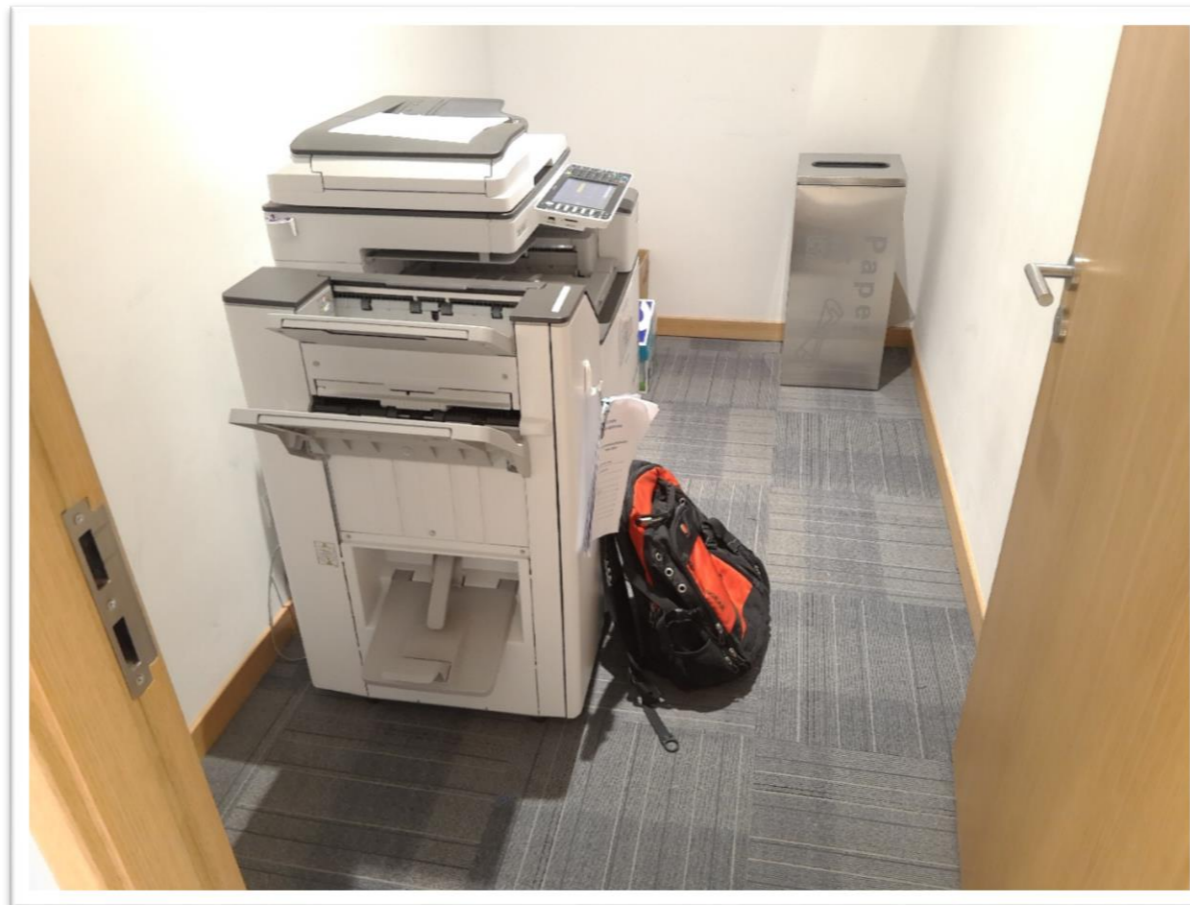
- *Don't store inflammable materials in your room.*
- *Don't panic when there is a fire. Keep calm and follow the tips for escaping a fire.*





上海纽约大学
NYU SHANGHAI

- **Please do not leave your belongings unattended on public space.**





上海纽约大学
NYU SHANGHAI

CONTACT INFO

You can use the following means of communication to contact Public Safety for 24/7:

- Walk-in
- Phone
- Email

We strongly recommend that you save our phone number in case of emergencies.



• **PHONE:**
2059-5500

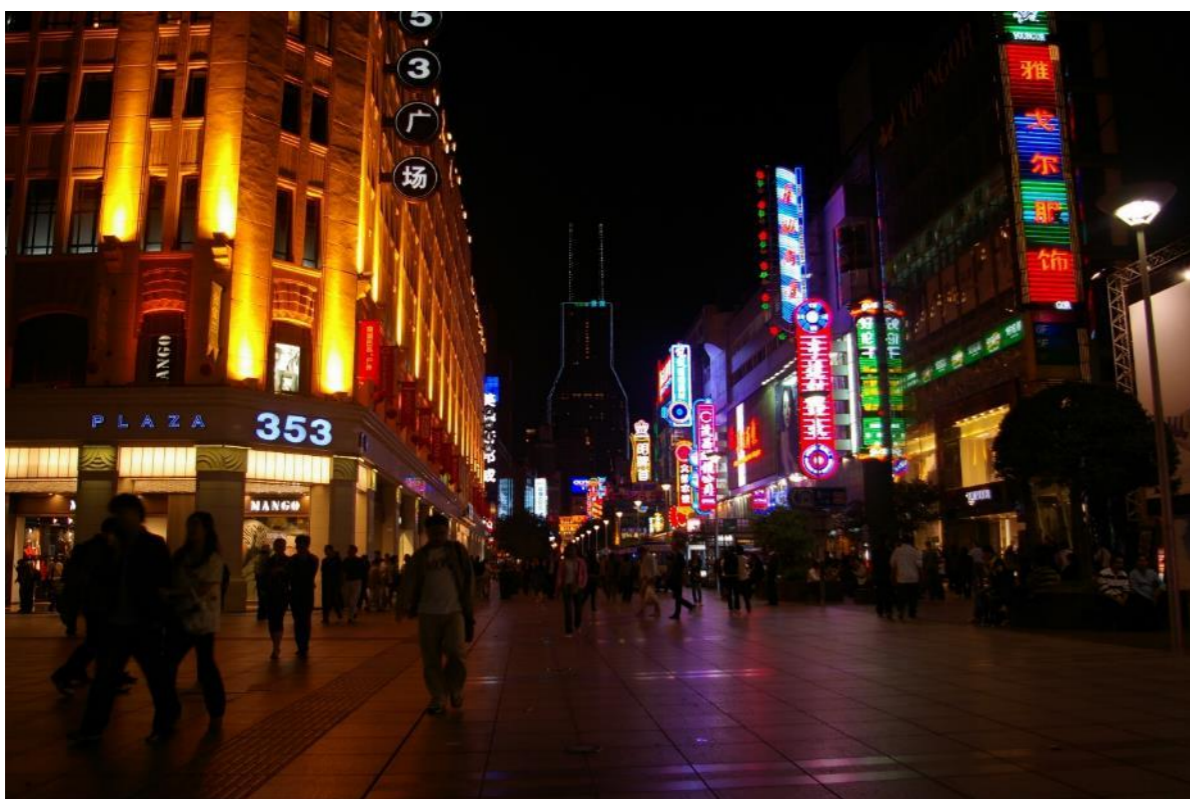
• **EMAIL:**
nyu-shanghai-dpscc-group@nyu.edu

• **COMMAND CENTRE:**
Room 118



上海纽约大学
NYU SHANGHAI

SAFETY IN SHANGHAI



Shanghai has a low crime rate, particular for a city of its size, but you should still be aware of the various scams and petty crimes, especially those directed towards foreigners.



上海纽约大学
NYU SHANGHAI

PETTY CRIMES AND SCAMS



- Be aware of crowded areas.
- Always be aware of purse snatchers when walking in public areas.
- Carry wallets in your front pocket.
- Use bags with zippers whenever possible.
- Always travel in groups of two or more.



上海纽约大学
NYU SHANGHAI

SCAM ARTISTS IN SHANGHAI



- Beware of online and text message scams that ask for personal information or request cash or credit card info.
- Beware of people offering big money in return for little money (“good faith” money).
- If it seems too good to be true – It is!
- Never give your information to anyone, even if they seem nice and friendly.



上海纽约大学
NYU SHANGHAI

INTERNET AND PHONE SCAMS

When shopping online or when you are on your phone:

- Beware of people who claim that there was a problem with your order and ask you to get your refund from an ATM
- Do not click links that ask you to pay for goods elsewhere, especially when they claim that you cannot use AliPay for whatever reason.
- Do not believe calls from Telecom or Bank “representatives” asking you to give information or remit money.
- Do not give your WeChat verification number under any circumstances, even if it is your “friend” asking you. They might have had their phones stolen and they can use this to steal your account.





上海纽约大学
NYU SHANGHAI

ATM SAFETY



- Use the ATM only during daylight hours.
- Try and use Bank ATMs only
- Look out for “shoulder surfers”, protect your PIN at all times.
- Avoid carrying large amounts of cash on your person.
- Avoid counting or displaying money on the street.



上海纽约大学
NYU SHANGHAI

TRAVELLING IN THE CITY



- Plan your route ahead of time.
- Metro does not run 24 hours a day. Check the Shanghai Metro Websites (www.shmetro.com) for timetables and specific times.
- iPads and iPhones are popular targets “Apple Picking”.
- Be aware of your surroundings.
- Trust your instincts.
- Travel in groups of 2 or more.
- Let a roommate know your whereabouts.



上海纽约大学
NYU SHANGHAI

TAKING A TAXI



Never ride unlicensed Taxis! How to identify an illegal taxi:

- They may not have a meter.
- They do not have a Taxi Sign on top.
- There is no Shanghai Taxi Drivers ID in the front window (see below) but may have a meter!
- The Shanghai Taxi Driver ID should have a photo.
- Always ask for a receipt (Fa Piao), just in case you forget something in the taxi.

Also, if you have to ride a taxi late at night, take down its plate number and send it to someone!



What taxis should you avoid

- You can identify a real taxi by its plate. All plates in Shanghai look similar to this 沪A-X1234. The first character identifies the plate as being from Shanghai (沪).
- The third character, the one after the little dot, that have been reserved for taxis are: U, V, W, M, N, X



上海纽约大学
NYU SHANGHAI

Staying In The City





上海纽约大学
NYU SHANGHAI

Staying In The City



夜晚危险系数较高的地方：

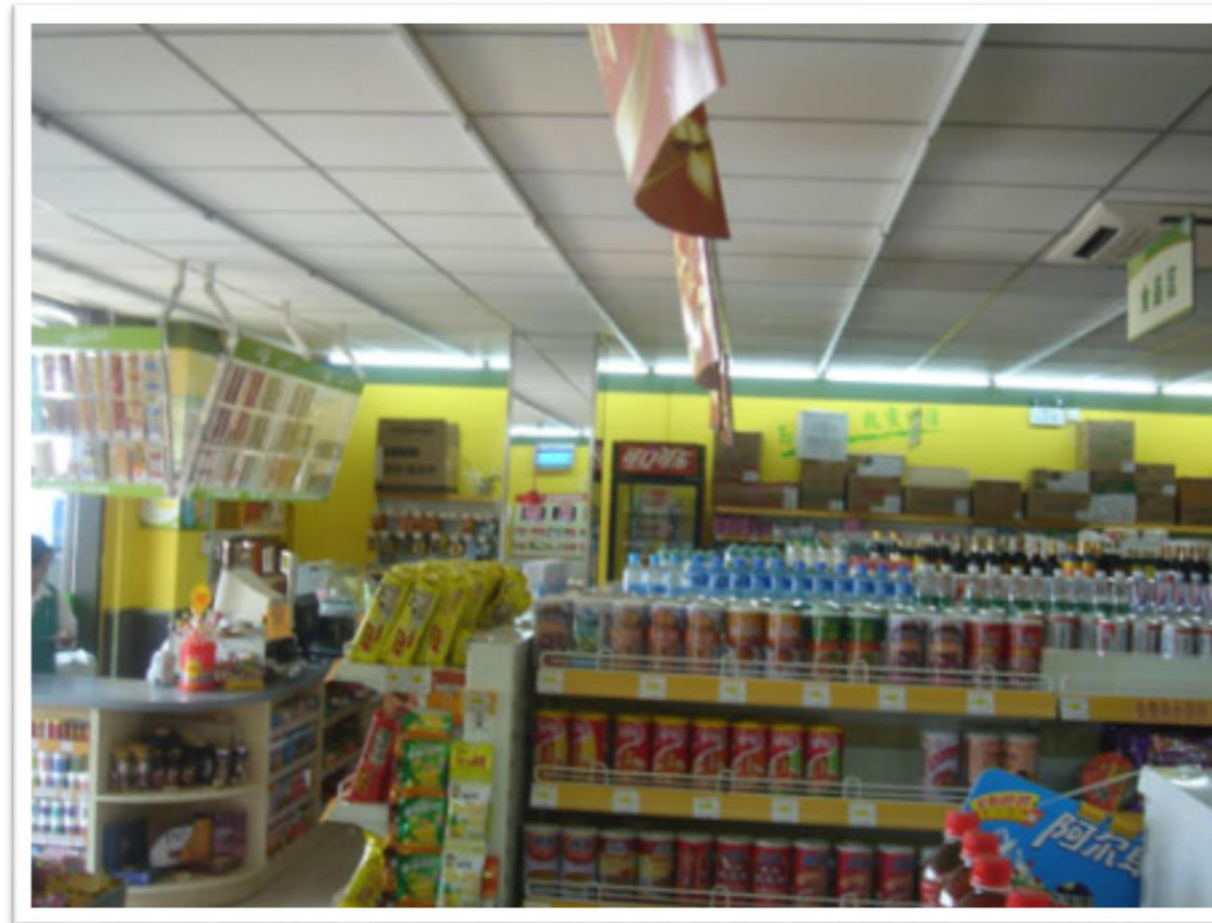


©新闻晨报



上海纽约大学
NYU SHANGHAI

- **Do not forget to pay the payment if you take something from the store.**





illegal behavior for alcohol

A person can be arrested or fined for being intoxicated and disorderly, so it is strongly recommended that you take care and keep an eye on your alcohol consumption. In particular, the following acts, which often come with intoxication, are punishable with a fine of no more than 500

RMB, and detainment for 5-10 days:

- 1. Gang Fights**
- 2. Chasing or heading off people**
- 3. Taking, demanding, damaging, or appropriating any public or private property.**
- 4. Making quarrels, or other sorts of trouble**



上海纽约大学
NYU SHANGHAI

illegal behavior for drug



- *Drugs are of particular risk to young students when they go to clubs and bars*
- *Keep your drinks attended: Drugs are easy to put in them*
- *Say no to candies and snacks that people give you. You don't know what's in them.*
- *Drugs can be used as a means for sexual assault and could lead you into trouble*



上海纽约大学
NYU SHANGHAI

LOCAL LAWS

- Narcotic Drugs: The term "narcotic drugs" as used in this Law means opium, heroin, methylaniline (ice), morphine, marijuana, cocaine and other narcotic and psychotropic substances that can make people addicted to their use and are controlled under State regulations.
- Whoever smuggles, traffics in, transports, manufactures or in possession of narcotic drugs are subject to penalties of ***imprisonment from no less than 3 years up to death*** depending on the quantity of narcotic drugs found.
- Purchasing or selling fake goods: intellectual property crimes carry ***penalties of 3 to 7 years of imprisonment.***
- Avoid participating in demonstrations; participating in such activities carry penalties of no less than ***5 years of imprisonment.***

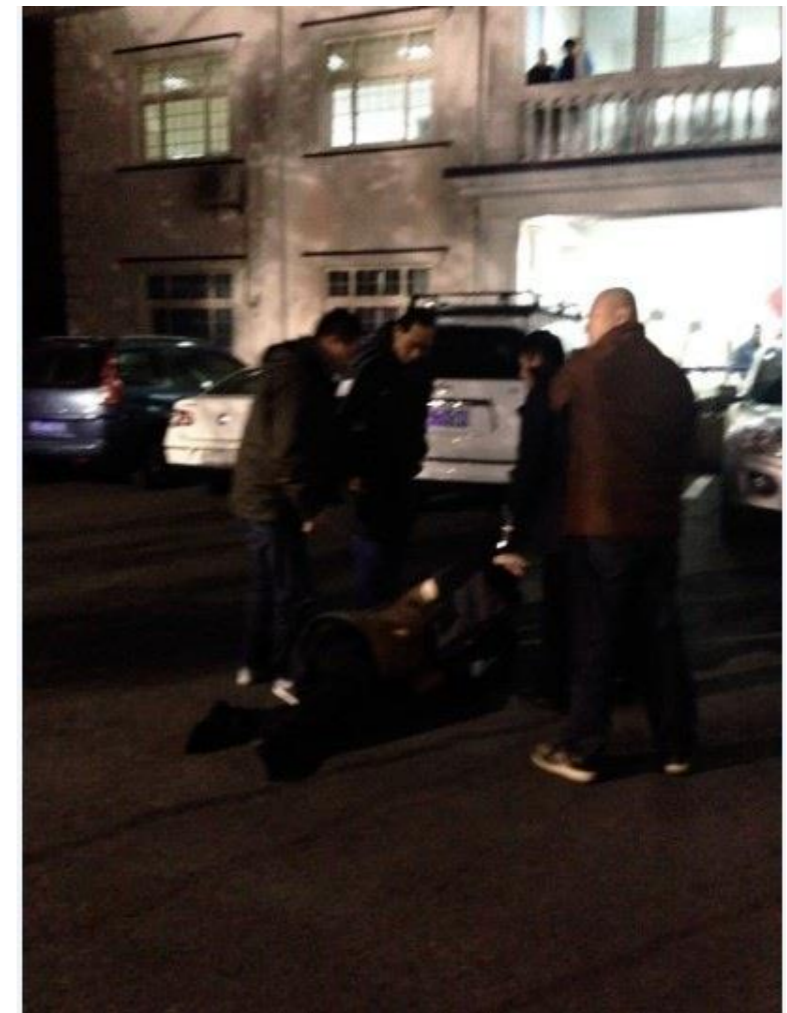
Source: PRC Criminal Law



上海纽约大学
NYU SHANGHAI

CASES OF ALCOHOL AND DRUG-RELATED CRIMES IN CHINA

- In Shanghai, a man was found unconscious and assaulted a policeman. The man was arrested and had no idea of his actions.
- In 2013, a woman tried to smuggle some drugs from abroad to Shanghai. After being caught, she was arrested and eventually sentenced to death.
- Penalties will in no way be more lenient, even if you are a foreigner.





上海纽约大学
NYU SHANGHAI

- **Thank you!**
- **Now we are open for questions.**

